

CASE STUDY

Building a 34,000 Square Foot Wall for a New Amazon Distribution Center

Petillo Construction partnered with Mid-Hudson Concrete Products to build a large retaining wall for a new Amazon distribution center in Hopewell Junction, New York. The project was challenging because of the wall's size and height and because space was tight with the wall backing up to property owned by the regional electric company. The solution was to use three different Mid-Hudson Concrete Products' Redi-Rock® systems to build the wall.

The Benefits of Redi-Rock Retaining Walls

Safety

Redi-Rock® walls create usable land. Whether you need to protect a shoreline from erosion, create a bigger backyard, or make room for a parking lot - Redi-Rock can help you find a solution to make the most of your space.

Appearance

Redi-Rock® blocks look good. That's because each block is cast in a mold taken from real natural stone. MHCP will be able to help you choose color options that match your landscape! See examples of LedgeStone, Cobblestone, and Lime Stone below.

Longevity

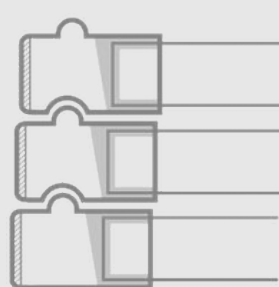
Redi-Rock blocks are cast using 4,000 PSI (27.6 MPa) concrete. The result is incredibly strong blocks that will stand up to harsh weather, freeze thaw cycles, wave action, and more. You'll find Redi-Rock walls at hospitals, schools, shopping centers, and tons of other locations.

About Redi-Rock Retaining Walls: Versatile, Durable & Attractive

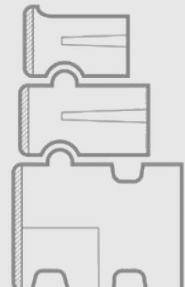
The versatility of the Redi-Rock system allows contractors, retaining wall engineers and landscape architects to create custom retaining wall solutions for a wide range of projects.

The design of the blocks allows for curved walls, 90-degree corners, and more to make a custom wall simple to install. Tall gravity walls are possible with Redi-Rock, meaning you won't have to mess with installing geogrid in many applications.

Building a wall used to mean laying stone walls rock by rock, a time and labor-intensive process. Redi-Rock walls allow complex structural walls to be built quickly. The addition of the ledgeStone finish was a game-changer for our businesses because it looks like real stone so it can be used in residential situations as well as commercial and municipal. The time they take to build now is about 1 week compared to 6 months of traditional wall builds. With Redi-Rock, if you can carry the blocks there you can build a wall there.



Tall Gravity Walls



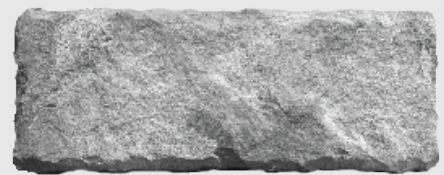
Even Taller Reinforced Walls



LedgeStone



Cobblestone



Lime Stone

Specs:

Wall length:	Wall height:	Size:	Number of blocks:	Time to Complete
1770 feet	33 feet	34,000 square feet	5,700	approximately 10 weeks (mid-May to July 26, 2021)

As part of building a 660,000 square foot modern industrial Amazon distribution center, Petillo Construction needed to construct a 1,770-foot retaining wall along the main entrance to the facility. This was the most extensive one-wall system Petillo Construction had ever built. Petillo Construction had a previous excellent experience with Mid-Hudson Concrete Products building a 24,000 square foot wall for a casino, so they selected our products for this project.



The Challenge

Challenges:

- Guy lines behind the wall
- Unusual height and length
- Delays to get an easement

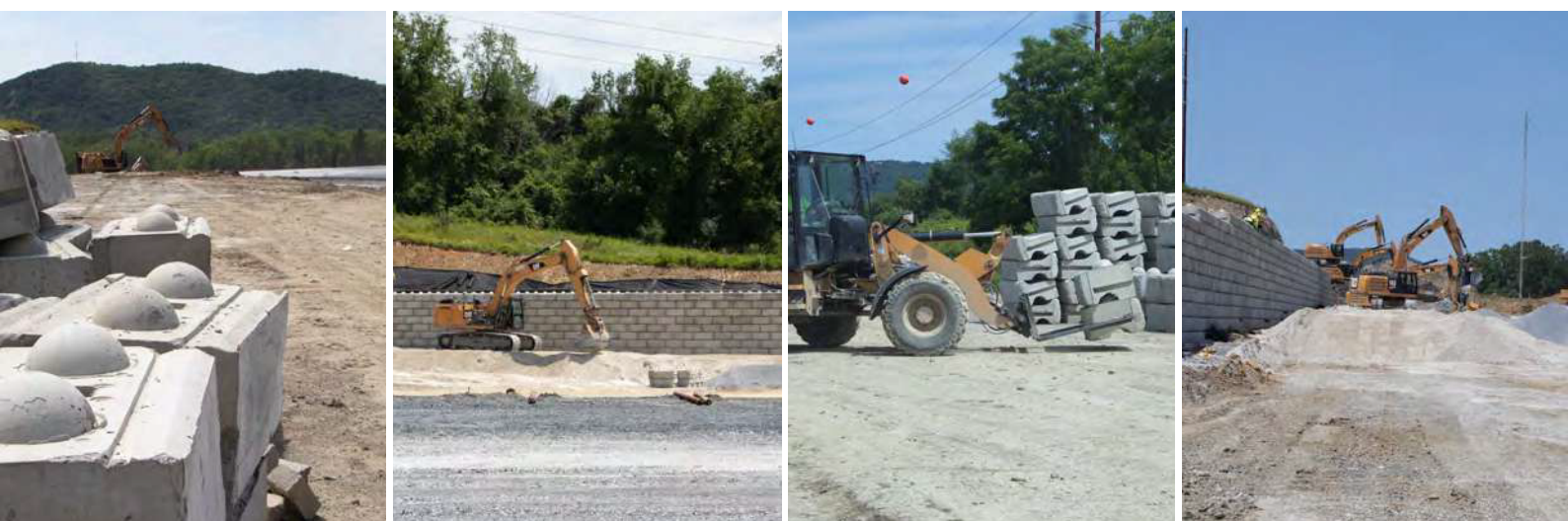
The regional electric company owned the property behind the wall site and had located guy wires on the property that conflicted with the wall construction area. The wall also infringed on the electric company's property by two feet. Petillo Construction worked with the electric company to move the guy wires and file for an easement. The easement took extra time, so Petillo Construction brought on additional crew members to catch up and stay on schedule.

The Solution

To accommodate the height of the wall and the grid zones behind it, Petillo used three different Mid-Hudson Concrete Products' Redi-Rock systems: gravity, A1P and PC. Using the three different systems saved space and helped Petillo Construction save on excavation and backfill. Mid-Hudson Concrete Products had the blocks Petillo Construction needed in stock and delivered six times a day, quickly supplying the products to complete the project on time. There were two existing small-block walls on the site. The client chose a Lime Stone face for the new Redi-Rock wall to match the existing walls.



The Work in Progress



About MHCP

Mid-Hudson Concrete Products is the leading provider of standard and custom precast concrete products, and the exclusive manufacturer of the Redi-Rock retaining wall system.

We're committed to developing long-lasting relationships with our customers by providing quality precast concrete products and exceptional customer service for general contractors, developers, civil engineers, landscape architects, and other construction and design professionals.

As the premier precast concrete manufacturer of the Hudson Valley, we provide reliable service and quality products for residential and commercial projects. We guarantee prompt delivery 6 days a week to Putnam, Orange, Ulster, Westchester, Rockland, and Dutchess Counties in New York.

The MHCP Process

- 1 Evaluation
- 2 Proposal
- 3 Order
- 4 Delivery
- 5 Installation