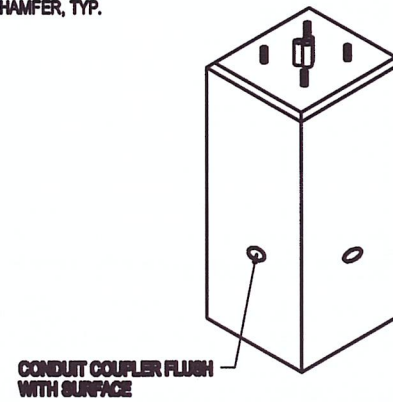


NOTES:

1. Concrete: 4000 psi @ 28 days
2. Conduit, Anchor Bolts and Template supplied by others
3. Light pole base to be specified by a Qualified Engineer

weight: 580 lbs / vertical foot




 MID-HUDSON CONCRETE PRODUCTS
 ROUTE 1, COLD SPRING, NY 10516
 (914) 265-3285

PRODUCT SPECIFICATION
LIGHT POLE BASE, SQUARE 24"

DRAWING NUMBER:
 LPB-24
 6/10/13